

TOONA 4

SOLEMYO OPERA BLUEBUS 24V 230V

For swing gates with leaves up to 3 m.

Electromechanical gear motor, surface mounted.

Also available in 24 Vdc version, with magnetic encoder.

Ideal for residential use.

Reliable: durability thanks to the housing, made up of two tough aluminium shells with polyester paint finish; more resistant to atmospheric agents.

Internal moving parts completely in steel, light alloys and technopolymers.

Silent: patented layout of internal parts and lead nut in bronze.

Generously sized and practical connection compartment:

rapid and easy access from above to internal parts located in the upper section of the motor.

Simple installation and maintenance;

with built-in capacitor.

Recommended control units:

Mindy A6F, A60, A700F; for T04024 Moonclever MC824H.

24 Vdc version with magnetic encoder.

Perfect for intensive use, compatible with the control unit

Moonclever MC824H:

- simple programming, by means of a single key;
- self-learning of opening and closing limit positions;
- automatic fault diagnostics;
- programming of pause time;
- pedestrian pass door;
- deceleration on opening and closing;
- obstacle detection with dual technology;
- operation in event of power failure by means of optional rechargeable batteries (PS324);
- provision for connection of latest generation resistive sensitive edges.

CODE	DESCRIPTION	PACK/PALLET
T04024	IRREVERSIBLE, 24 Vdc, WITH MAGNETIC ENCODER, MECHANICAL STOP ON OPENING	20
T04005	IRREVERSIBLE, 230 Vac, INCREASED SPEED, WITH LIMIT SWITCH ON OPENING	20
T04006	IRREVERSIBLE, 230 Vac, INCREASED SPEED, WITH LIMIT SWITCH ON OPENING AND CLOSING	20
T04015	IRREVERSIBLE, 230 Vac, CRUISING SPEED, WITH LIMIT SWITCH ON OPENING	20
T04605	REVERSIBLE, 230 Vac, INCREASED SPEED, WITH LIMIT SWITCH ON OPENING	20

TECHNICAL SPECIFICATIONS

CODE	T04024	T04005	T04006	T04015	T04605
ELECTRICAL DATA					
POWER SUPPLY (Vac 50 Hz)*	-	230			
POWER SUPPLY (Vdc)	24	-			
ABSORPTION (A)	5	1.5		1.3	
POWER (W)	120	340		300	
PERFORMANCE DATA					
SPEED (m/s)	0.016		0.013		0.016
FORCE (N)	1800				
WORK CYCLE (CYCLES/HOUR)	95**	58		54	50
DIMENSIONAL AND GENERAL DATA					
PROTECTION LEVEL (IP)	44				
WORKING TEMP. (°C MIN/MAX)	-20 ÷ +50				
DIMENSIONS (mm)	820x115x105 h				
WEIGHT (kg)	6				

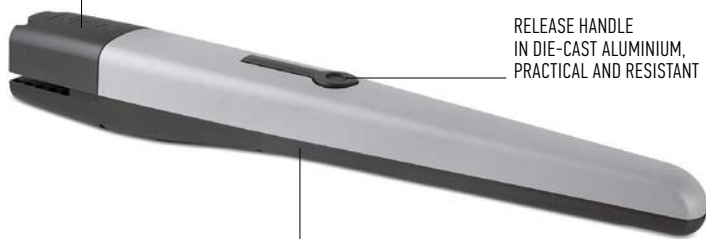
*60 Hz version available on request.

** With optimal installation.

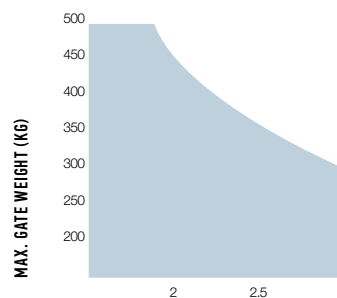
EASY ACCESS TO INTERNAL PARTS IN UPPER SECTION OF MOTOR

RELEASE HANDLE IN DIE-CAST ALUMINIUM, PRACTICAL AND RESISTANT

EXCLUSIVE PATENTED LAYOUT OF INTERNAL PARTS



UTILISATION LIMITS



The shape, the height of the gate and the weather conditions can considerably reduce the values shown in the graph to the side. Use in windy areas 230 Vac models.

DIMENSIONS

